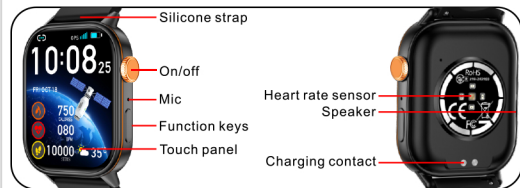


# ACTIVE Pro



## Overview



## Power on/off



1. Press the key for 3 seconds to turn on or off.
2. On the main interface, Press the screen to switch the dial.

## APP Download and Installation

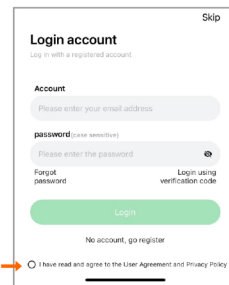
1. Scan the following QR code to download and install the "GloryFitPro" from the App Store / Google Play Store.

Minimum requirements: iOS 9.0+, Android 5.0+

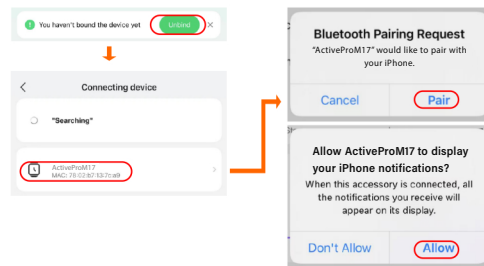
GloryFitPro



2. Once the app is installed, register for an account or press skip and continue as guest. Enter the basic information and save your profile.



3. Pair the watch



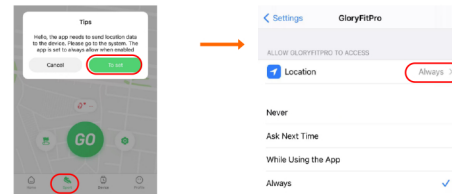
4. Once the watch is connected to the app on your phone, set the watch functions on the app based on your preference.

## Features



## Important Note about GPS

Set the app permission on your phone as shown below:



## Terms of Use

1. Please avoid strong impact, high temperature or exposure to the sun.
2. Do not disassemble, repair or modify the watch.
3. The watch can be charged with 5V 500mA – 5V 2A charger. It is strictly prohibited to use higher voltage power supply for charging.
4. Avoid getting the watch wet, or charge when it is wet.
5. The data is for reference only, please do not use the watch for medical purposes.

### Notice:

The company reserves the right to modify the contents of this manual without any notice. It is normal that some functions are different in specific software versions.

### FCC Warning

This device complies with part 15 of the FCC Rules. Operation is subject to the following two conditions:  
 (1) This device may not cause harmful interference, and  
 (2) this device must accept any interference received, including interference that may cause undesired operation. Any Changes or modifications not expressly approved by the party responsible for compliance could void the user's authority to operate the equipment.

Note: This equipment has been tested and found to comply with the limits for a Class B digital device, pursuant to part 15 of the FCC Rules. These limits are designed to provide reasonable protection against harmful interference in a residential installation. This equipment generates uses and can radiate radio frequency energy and, if not installed and used in accordance with the instructions, may cause harmful interference to radio communications. However, there is no guarantee that interference will not occur in a particular installation. If this equipment does cause harmful interference to radio or television reception, which can be determined by turning the equipment off and on, the user is encouraged to try to correct the interference by one or more of the following measures:  
 -Reorient or relocate the receiving antenna.  
 -Increase the separation between the equipment and receiver.  
 -Connect the equipment into an outlet on a circuit different from that to which the receiver is connected.  
 -Consult the dealer or an experienced radio/TV technician for help.

The device has been evaluated to meet general RF exposure requirement. The device can be used in portable exposure condition without restriction.



warn:

Please consult your doctor before starting a new exercise program. Although smart watches can monitor real-time dynamic heart rate, they cannot be used for any medical purposes.